

94°44'W

94°42'W

94°40'W

# MARINE POLLUTION SURVEILLANCE REPORT



Analysis by: The National Oceanic and  
Atmospheric Administration, Satellite and  
Information Service (NOAA/NESDIS)



REPORT DATE/TIME: 5/4/2021 1100 (UTC)

DATA SOURCE: SENTINEL2A

MODE: Multispectral

RESOLUTION: 10 meter

IMAGE DATE/TIME: 5/3/2021 1648 (UTC)



Possible Oil



Possible Thicker Oil



Suspected Point Source:  
[26°56'21" N/94°41'20" W]

1.97 km<sup>2</sup>

Total Area of Possible Oil

AREA/BLOCK: ALAMINOS CANYON 25

REMARKS: Possible oil was observed in satellite imagery. This anomaly is unconfirmed as oil. The anomaly was centered approx. 171 NMI ESE from Corpus Christi, TX. The anomaly was measured approx. 5.09 NMI long and 0.14 NMI wide. The anomaly features widening with distance and a fair contrast against the ocean background. The anomaly appears to be connected to an oil platform and was believed to correspond to NRC #1304046.

UNCERTAINTIES: There is no uncertainty since the anomaly was believed to correspond to a previous NRC report

Neither the United States Government, nor its employees, make any warranty nor assume liability or responsibility for the accuracy or completeness of this product.  
For further information on oil spill response and assessment go to:  
<https://response.restoration.noaa.gov/oil-and-chemical-spills/oil-spills>

## UNCONFIRMED AS OIL

"Possible Oil" depicts area that satellite analyst believes might contain oil but this is unconfirmed

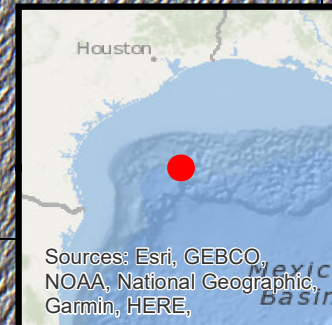
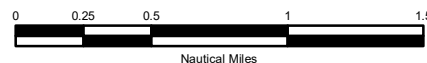
**CONFIDENCE: High**  
(Low, Medium, Medium-High, High)

27°0'N

26°58'N

26°56'N

Analyst was unable to differentiate between thicker and thinner oil due to imagery limitations or unfavorable environmental conditions.



Sources: Esri, GEBCO,  
NOAA, National Geographic,  
Garmin, HERE,

